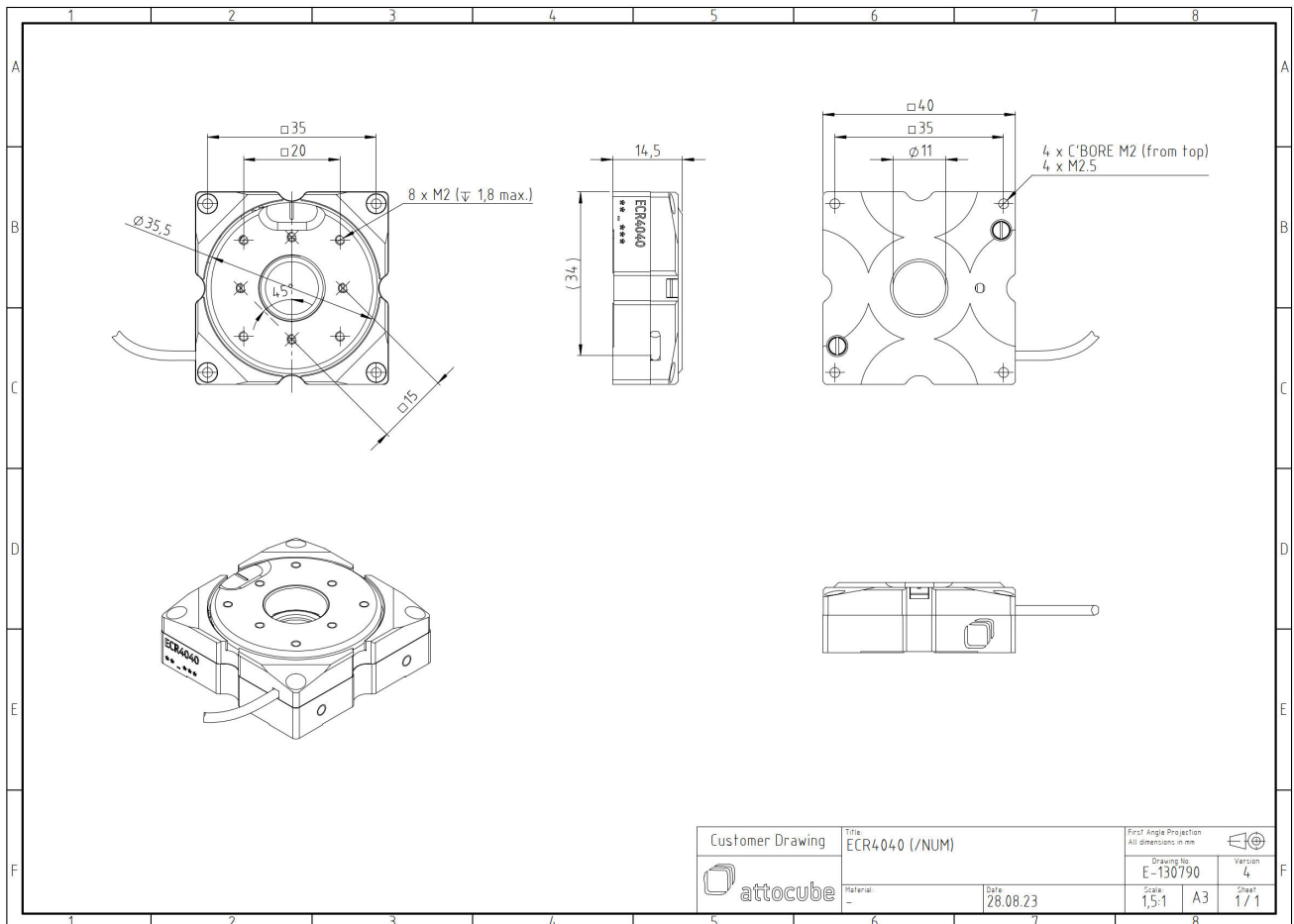


ECR4040/AI/RT

1009634

Technical Specifications

Size and Dimensions	
footprint; height	40 mm x 40 mm; 14.5 mm
weight	54 g
height	14.5 mm
Materials	
positioner body	aluminum
actuator	PZT ceramics
connecting wires	copper, jacket: RT: PTFE, HV/UHV: fiberglass
Coarse Positioning Mode	
travel range (step mode)	360 ° endless
maximum drive velocity @ 300 K	10 °/s
input voltage range	0 - 45 V
Fine Positioning Mode	
fine angular positioning range @ 300 K	6 m°
fine positioning resolution	μ°
input DC voltage range	0 - 45 V
Load (@ ambient conditions)	
maximum load	2 kg
maximum dynamic torque around axis	1 Ncm
General Specifications	
environment	/RT



Customer Drawing	Title	ECR4040 (/NUM)		First Angle Projection
	All dimensions in mm			
	Drawing No.	E-130790	Version	4
	Material	-	Scale	1,5:1
	Date	28.08.23	Sheet	1 / 1
			Size	A3